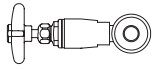
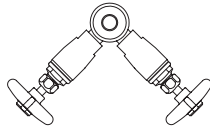


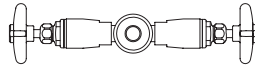
### ○ L3180-131WSA Needle Valve Assembly, Overhead Mounted Single



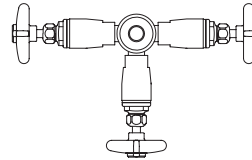
**L3180-131WSA**  
Single



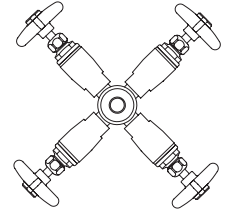
**L3180-132AWSA**  
90° Double



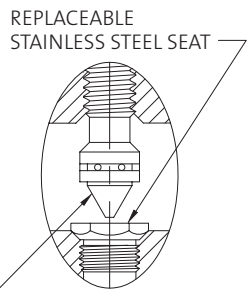
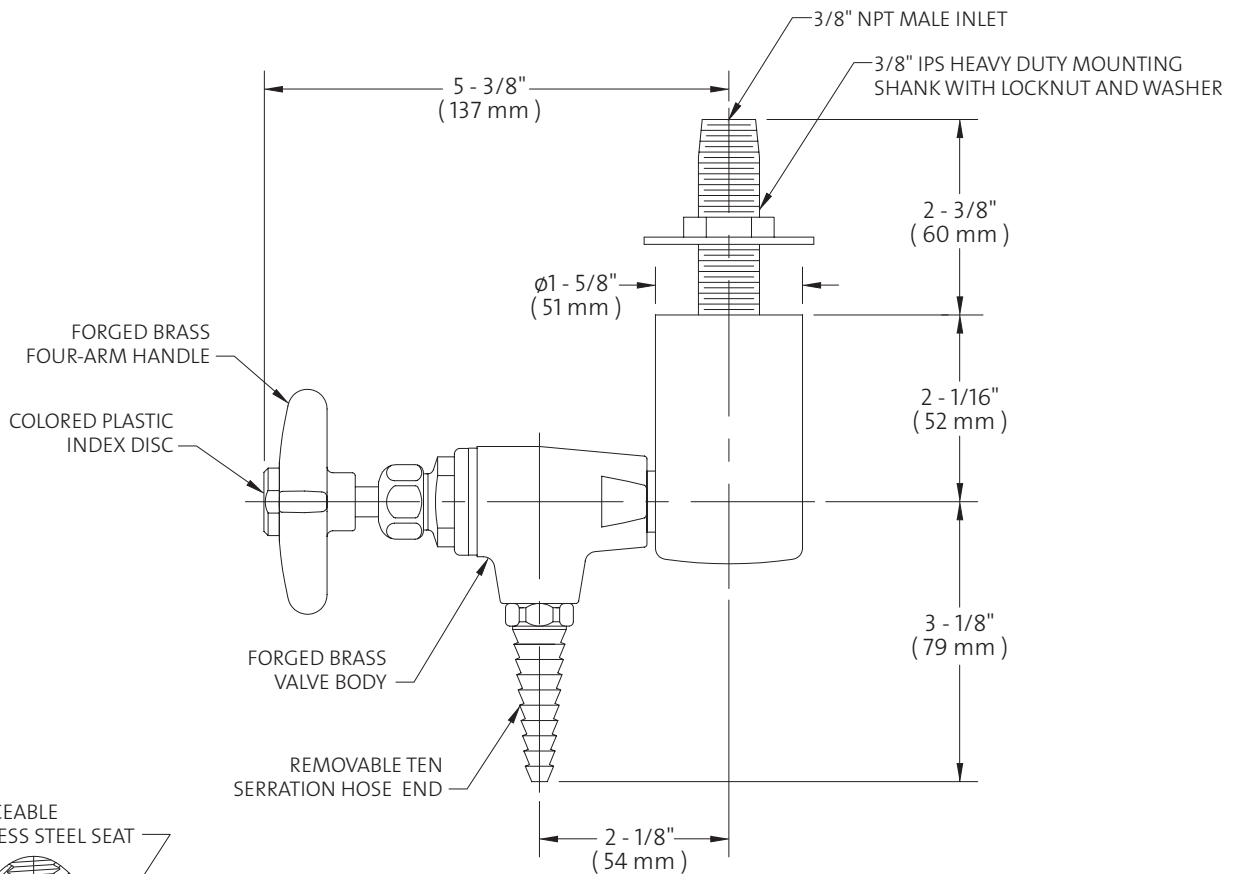
**L3180-132SWSA**  
180° Double



**L3180-133WSA**  
3-Way



**L3180-134WSA**  
4-Way



REPLACEABLE STAINLESS STEEL SEAT

REPLACEABLE STAINLESS STEEL FLOATING NEEDLE



#### NOTES:

1. VALVE IS CERTIFIED BY CSA INTERNATIONAL TO COMPLY WITH ANSI 21.12 AND CGA 9.1.
2. FIXTURE IS FULLY ASSEMBLED AND FACTORY TESTED AT 225 PSI NITROGEN PRESSURE. MAXIMUM WORKING PRESSURE IS 150 PSI.
3. SPECIFY IF CLEANING FOR OXYGEN AND HIGH PURITY GASES IS REQUIRED.

Measurements may vary  $\pm 1/4$ ".

© 2008 / WaterSaver Faucet Co.