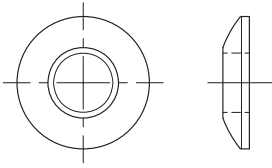


Inlet Fittings



CTBI226
Brass Escutcheon for G1/2 mounting shank. Specify finish when ordering.



BI237-02-08R

Mounting shank with locknut and washer. 3/8" MNPT x G1/2 x 2 1/2" (64mm) OAL.

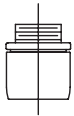
BI237-02-14R

Same as above except 2 7/8" (73mm) OAL.

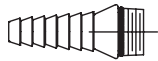
BI237-03-08R

Same as above except 3 1/2" (89mm) OAL.

Outlet Fittings

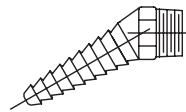


CTBO055
Aerator. 3/8" IPS male inlet. Specify finish when ordering.



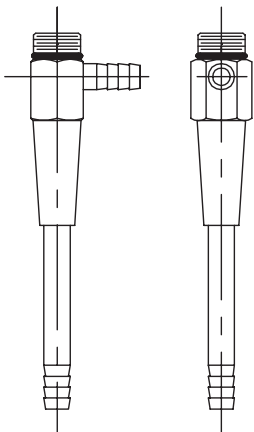
CTBO138S
Straight seven serration hose end. 3/8" IPS male inlet. Specify finish when ordering.

CTBO138S-1/4
Same as above except with 1/4" IPS male inlet.



CTBO142

Angle ten serration hose end. 3/8" NPT male inlet. Specify finish when ordering.



CTBO127S
Aspirator. 3/8" IPS male inlet, 1/4" IPS male outlet. Specify finish when ordering.

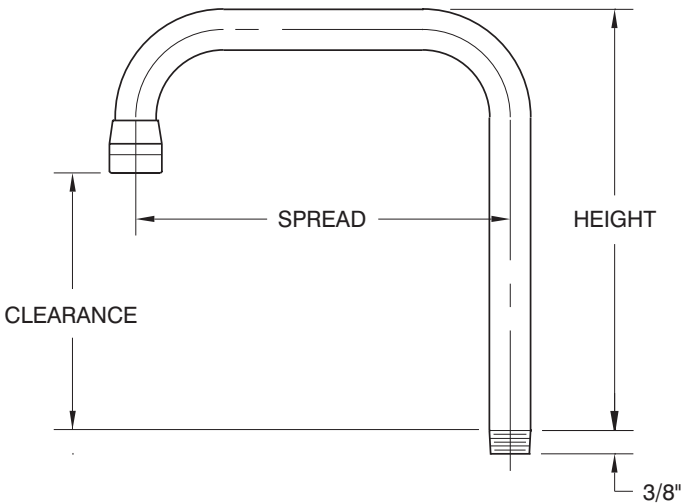


BO125

Rubber splash eliminator for use with CTBO127S aspirator.

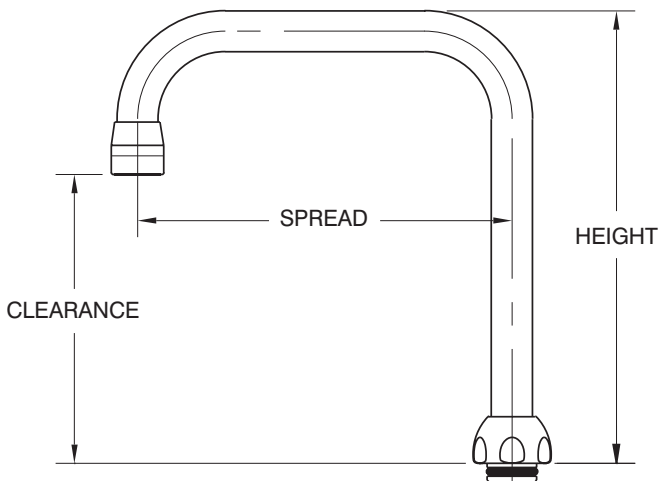
Goosenecks and Spouts

Rigid Goosenecks

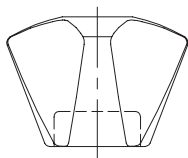


Item No.	Spread	Height	Clearance
BTRG4	4" (102mm)	7 3/4" (197mm)	5-1/8" (130mm)
BTRG6	6" (152mm)		
BTRG8	8" (203mm)		
BTRG9	9" (229mm)		
BTRG10	10" (250mm)		
BTRG12	12" (305mm)		

Rigid/Swing Goosenecks and Spouts



Item No.	Spread	Height	Clearance
Goosenecks			
BTRS4	4" (102mm)	8 1/4" (210mm)	5 5/8" (143mm)
BTRS6	6" (152mm)		
BTRS8	8" (203mm)		
BTRS9	9" (229mm)		
BTRS10	10" (250mm)		
BTRS12	12" (305mm)		
Spouts			
BTRSW6	6" (152mm)	4-3/8" (111mm)	1-1/2" (38mm)
BTRSW9	9" (229mm)	5-1/8" (130mm)	2-1/4" (57mm)
BTRSW12	12" (305mm)	5-7/8" (149mm)	3" (76mm)

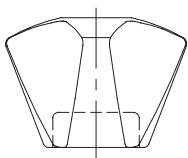
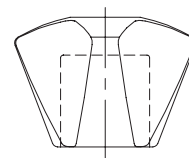


PA210DIN

Molded nylon handle for water taps and valves. Specify color when ordering.

PA211DIN

Molded nylon handle for needle valves and remote control fume hood valves. Specify color when ordering.

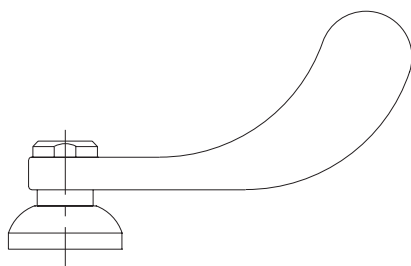
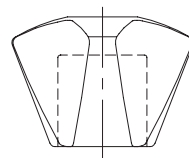


AA210DIN

Diecast aluminum handle for water taps and valves. Furnished with powder coated finish. Specify color when ordering.

AA211DIN

Diecast aluminum handle for needle valves and remote control fume hood valves. Furnished with powder coated finish. Specify color when ordering.



CTBA039TS

4" wrist blade handle. Furnished with powder coated finish. Specify finish when ordering.

PA032

Molded nylon index disc. Specify color and service when ordering.

PA207

Molded nylon index ring. Specify color when ordering.



Components

Shower Heads



330-12-08RSE-ORG
Orange Plastic Street Elbow

330-12-08RSE-GRN
Green Plastic Street Elbow

330-12-08RSE-YEL
Yellow Plastic Street Elbow

1" NPT female inlet,
1 1/2" NPT male outlet.



300-08SE
1" IPS Galvanized Steel
Street Elbow

310-08SE
1" IPS Polished Chrome
Plated Brass Street Elbow

320-08SE
1" IPS Stainless Steel
Street Elbow



AP450-032ORG
Orange Plastic Shower Head.
1 1/2" NPT female inlet.



AP450-048
Stainless Steel Shower Head.
1" NPT female inlet.



AP450-032GRN
Green Plastic Shower Head.
1 1/2" NPT female inlet.



AP450-062
Stainless Steel Flanged
Shower Head.
1" NPT female inlet.

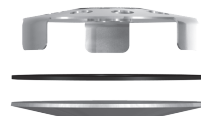


AP450-032YEL
Yellow Plastic Shower Head.
1 1/2" NPT female inlet.

Bowls

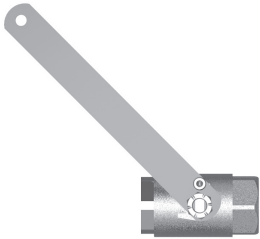


100-008R
Stainless Steel Bowl

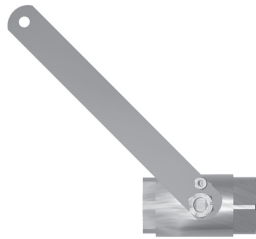


AP150-012B
Stainless Steel Drain Plate with
Cupped Washer and Gasket for
Stainless Steel Bowl

Shower Valves and Actuators

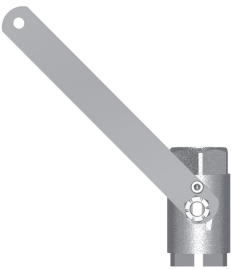


AP600-335H
1" IPS Chrome Plated Brass Stay-Open Ball Valve with Actuating Arm (Horizontal Installation)



AP620-335H
1" IPS Stainless Steel Stay-Open Ball Valve with Actuating Arm (Horizontal Installation)

AP600-345H
1" IPS Chrome Plated Brass Self-Closing Ball Valve with Actuating Arm (Horizontal Installation)

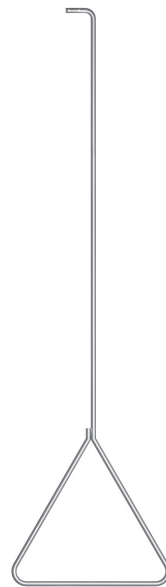


AP600-335V
1" IPS Chrome Plated Brass Stay-Open Ball Valve with Actuating Arm (Vertical Installation)

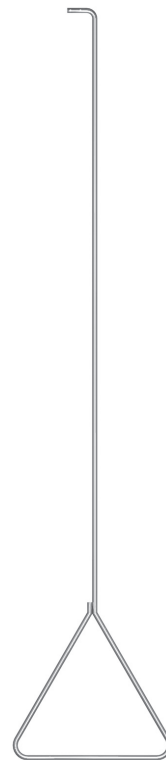


AP620-335V
1" IPS Stainless Steel Stay-Open Ball Valve with Actuating Arm (Vertical Installation)

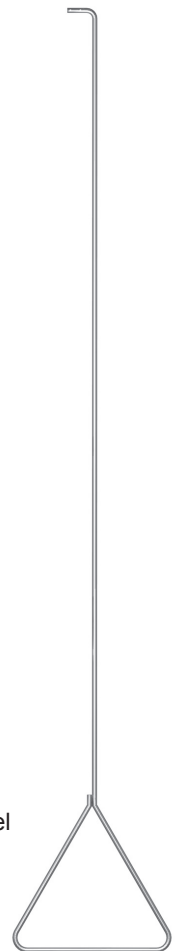
AP600-345V
1" IPS Chrome Plated Brass Self-Closing Ball Valve with Actuating Arm (Vertical Installation)



AP050-079
29" Stainless Steel Pull Rod

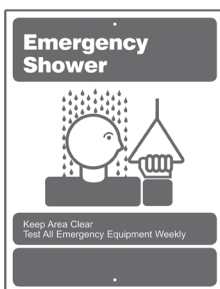


AP050-080
43" Stainless Steel Pull Rod

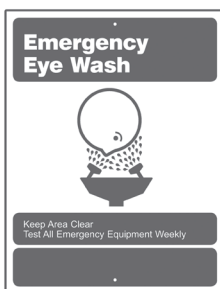


AP050-081
Custom Length Stainless Steel Pull Rod. Specify length when ordering (85" maximum).

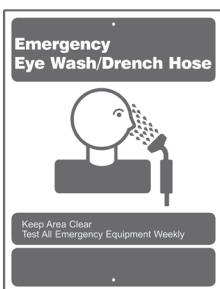
Signs



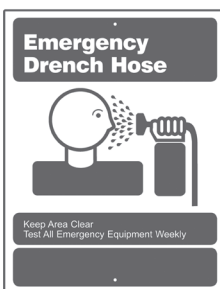
250-009G



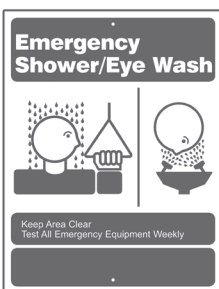
250-007G



250-010G



250-006G



AP250-008G



250-012G

Eye and Eye/Face Wash Valves and Actuators

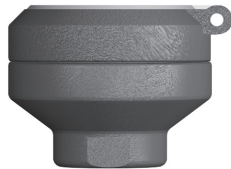


AP600-101H
1/2" IPS Chrome Plated Brass Stay-Open Ball Valve with Flag Handle



AP620-101H
1/2" IPS Stainless Steel Stay-Open Ball Valve with Flag Handle

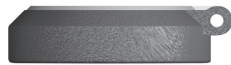
Spray Heads



AP470-001
GS-Plus Spray Head.
1/4" NPT female inlet.



AP470-021
FS-Plus Spray Head.
1/4" NPT female inlet.



AP470-002ORG-R
1 1/2" Diameter Spray Cover with
"Flip Top" Dust Cover (Package of 6)



AP470-022RG-R
2 1/2" Diameter Spray Cover with
"Flip Top" Dust Cover (Package of 6)



470-004R
1" Diameter Foam Filter
(Package of 6)



470-024R
1" Diameter Foam Filter
(Package of 6)



470-001R
GS-Plus Spray Head Body
(Package of 6)



470-021R
FS-Plus Spray Head Body
(Package of 6)



470-005R
1.8 Gallon Per Minute Flow Control
(Package of 6)



470-025R
3.2 Gallon Per Minute Flow Control
(Package of 6)